

# SCALE AND ARPEGGIO PATTERNS

The examples on the following pages clarify patterns and ranges found in this syllabus. Reference should be made to the appropriate syllabus pages for the full requirements for each instrument.

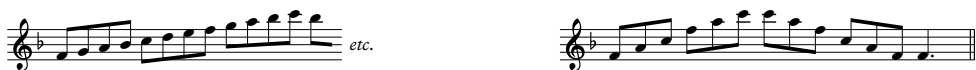
## All instruments

### SCALES AND ARPEGGIOS

one octave and down to the dominant (*recorder only*)



to a twelfth (and similarly, two and a half octaves)



### SCALES IN THIRDS

one octave (and similarly, two or three octaves)



*Bassoon: ending for B $\flat$  major*

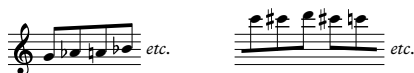


to a twelfth



### CHROMATIC SCALES

to a twelfth (and similarly, two and a half octaves)



### DOMINANT SEVENTHS (resolving on tonic)

one octave (and similarly, two or three octaves)



to a twelfth (and similarly, two and a half octaves)



### DIMINISHED SEVENTHS

to a twelfth (and similarly, two and a half octaves)



## Treble Recorder

### EXTENDED-RANGE SCALES

B $\flat$  major

E $\flat$  major

D harmonic minor

### EXTENDED-RANGE ARPEGGIOS

E $\flat$  major

D minor

## Flute

### EXTENDED-RANGE SCALES

F major

G major

F harmonic minor

### EXTENDED-RANGE ARPEGGIOS

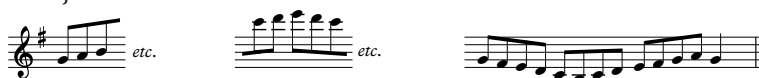
G major

F minor

## Oboe

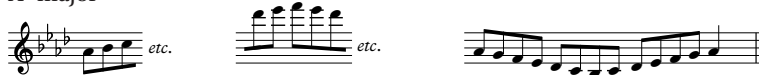
### EXTENDED-RANGE SCALES

G major



Ascending: G4-A4-B4-C5-D5-E5-F#5-G6  
Descending: G6-F#5-E5-D5-C5-B4-A4-G4  
Arpeggiated: G4-A4-B4-C5-D5-E5-F#5-G6

A<sup>b</sup> major



Ascending: A3-B3-C4-D4-E4-F4-G4-A4  
Descending: A4-G4-F4-E4-D4-C4-B3-A3  
Arpeggiated: A3-B3-C4-D4-E4-F4-G4-A4

D harmonic minor



Ascending: D4-E4-F4-G4-A4-B4-C#5-D5  
Descending: D5-C#5-B4-A4-G4-F4-E4-D4  
Arpeggiated: D4-E4-F4-G4-A4-B4-C#5-D5

### EXTENDED-RANGE ARPEGGIOS

A<sup>b</sup> major



A3-B3-C4-D4-E4-F4-G4-A4

D minor



D4-E4-F4-G4-A4-B4-C5-D5

## Clarinet

### EXTENDED-RANGE SCALES

C major



Ascending: C4-D4-E4-F4-G4-A4-B4-C5  
Descending: C5-B4-A4-G4-F4-E4-D4-C4  
Arpeggiated: C4-D4-E4-F4-G4-A4-B4-C5

A major



Ascending: A3-B3-C#4-D4-E4-F#4-G4-A4  
Descending: A4-G4-F#4-E4-D4-C#4-B3-A3  
Arpeggiated: A3-B3-C#4-D4-E4-F#4-G4-A4

E harmonic minor



Ascending: E4-F4-G4-A4-B4-C#5-E5  
Descending: E5-C#5-B4-A4-G4-F4-E4  
Arpeggiated: E4-F4-G4-A4-B4-C#5-E5

### EXTENDED-RANGE ARPEGGIOS

A major



A3-B3-C#4-D4-E4-F#4-G4-A4

E minor



E4-F4-G4-A4-B4-C5-E5

## Bassoon

### EXTENDED-RANGE SCALES

E major

A $\flat$  major

A harmonic minor

### EXTENDED-RANGE ARPEGGIOS

A $\flat$  major

A minor

## Saxophone

### EXTENDED-RANGE SCALES

E $\flat$  major

A $\flat$  major

A harmonic minor

### EXTENDED-RANGE ARPEGGIOS

A $\flat$  major

A minor